



HFS HEAVY INDUSTRIES SDN. BHD.

CORPORATE PROFILE

Building the Future
Restoring the Power



HFS HEAVY INDUSTRIES SDN BHD (613881-P)

Head Office
No.11, Jalan Ekoperniagaan 1/29,
Taman Ekoperniagaan,
81100 Johor Bahru,
Johor Darul Takzim, Malaysia

T +607 871 1188
F +607 871 1199
E enquiry@hfsheavy.com
W www.hfsheavy.com



CONTENTS

01

ABOUT US

02

VISION & MISSION

03

QUALITY POLICY

04

OCCUPATIONAL
HEALTH &
SAFETY POLICY

05 - 14

POWER
GENERATION
DIVISION

15 - 18

OIL & GAS DIVISION
MARINE BUSINESS
DIVISION

19 - 20

VALVE SERVICE
DIVISION

21 - 22

ENGINEERING &
CONSULTATION
DIVISION

23 - 24

LEGATEST IN-SITU
/ ONLINE VALVE
TESTING SERVICE

25 - 26

HFS GLOBAL
PARTNER

27

CORPORATE
STRUCTURE OUR
CERTIFICATE

24 - 32

PROJECT
HIGHLIGHT

Building the Future
Restoring the Power



TOTAL QUALITY MANAGEMENT

Through the years, HFS has honed our niche of providing total EPC service via total quality management approach to satisfy the needs of our client from diverse industries.

The wide range of successful project we have completed, including Non-Pressure part, Pressure Part replacement, and I&C works, as well as supplied skilled workforce for the marine, power generation and oil & gas industries, aptly reflects our commitments to total quality management.

ABOUT US

STRONG FOUNDATIONS

Backed by more than a decade of experience in providing the total Engineering, Procurement and Construction (hereinafter in referred to as "EPC") service for various industries, HFS Heavy Industries Sdn. Bhd has come a long way to be recognized as a reputable industry player in Malaysia since establishment in 2003.

Our comprehensive workshop facilities, certification that have met the highest standards, as well as accreditations by various statutory, regulatory and professional bodies, are a testament to the top quality assurance which we provided. Building on the foundation, we will continue to raise quality and service standards to greater heights to ensure client's total satisfaction



VISION

To become the industry leader renowned for spearheading the total suite of one-stop, EPC service to raise infrastructure perfection to greater heights.

MISSION

- ▶ To provide the most efficient, sustainable and reliable engineering, fabrication, part supply, installation and services, guided by our total quality management approach.
- ▶ To strive for continuous technological innovations so as to power our clients' infrastructural needs with the most advanced and achieve greater efficiency.
- ▶ To develop the best talents for the industry by enhancing professionalism, fostering commitment and inculcating a can-do spirit among our staff.

QUALITY POLICY

The management and the employees of HFS Heavy Industries Sdn Bhd are committed to ensure the company objectives are met and providing our clients with the comfort and satisfaction of achieving and exceeding their requirements and expectations.

This will be achieved by adopting a continual improvement of our Quality Management System through:

- ▶ Ensure we understand our Client requirements; legal and other requirements are satisfied and comply to the best of our ability.
- ▶ To strengthen relationships and encourage repeat business with existing Clients.
- ▶ To win work not solely on price but through innovation and added value.
- ▶ Continually strive to improve our performance through analysis and to reduce the occurrence of nonconformity at all levels of business and stages of a project.

- ▶ Effective and efficient management of company human resources that helps the realization of projects in advance of set deadlines, conforming to every quality standard prescribed.
- ▶ To prioritize and value the most valuable asset of HFS, company employees, and to contribute to their technical and self-development through company's structured training programs leading to motivation & empowerment, and to provide social securities.
- ▶ To engender a positive commitment to quality and create an environment of teamwork and cooperation that enables employees to work effectively.
- ▶ To take action plan to address company risks and opportunities by identifying internal and external issues, QMS process and interested parties.

HFS acknowledges that it is incumbent on employees at all levels to ensure that the provisions of the Quality Management System are attained. This is achieved by effective communication and employee's acceptance of their responsibilities with respect to fulfilling the Company's quality objectives.



OCCUPATIONAL HEALTH & SAFETY POLICY

It is the responsibility and commitment of HFS Heavy Industries Sdn Bhd to provide safe and healthy working environment for our employees through:

- ▶ Provide safe and healthy working conditions for the prevention of work-related injury and ill health for its employees, contractors and visitors,
- ▶ Eliminate hazards and reduce OH&S risks by considering the purpose, size and context of the organization
- ▶ Comply with all applicable safety and health laws and regulations
- ▶ Continual improvement of the OSH management system
- ▶ Develop and enforce the use of safe working practices
- ▶ Provide consultation and participation of workers and training to employees to conduct their work in safe & health manner.

In conducting our business activities, employees of HFS and contractors shall strive to:

- ▶ Prevent all occupational illness
- ▶ Prevent all accidents and injuries
- ▶ Prevent property damage

It shall be the duty of every employee to:

- ▶ Commit the above objectives
- ▶ Report hazards
- ▶ Cooperate with management, participate in safe and health programs and comply with all applicable safe and health laws and regulations.

The application of sound safety and health practices for the protection of our people is an essential factor in the overall success of our business.

POWER GENERATION DIVISION



POWER GENERATION

With more than 16 Years of combined experience in managing a wide array of power plant projects, the team in our power generation division is known for delivering impeccable engineering, fabrication, constructing, inspection, repair, retrofit and maintenance services for thermal power plants, co-generation power plants and combined-cycle power plants.

Aimed at assisting our clients on the upkeep and O&M (Operation and Maintenance) improvement of their existing fleets, HFS has developed the capability to service HRSG, IB, FH and Coal Boiler and provide technical solutions to a wide range of reliability, performance and emission issues.

Our engineers are experienced and professional in providing technical solution when client have issue or problem. HFS have been able to produce successful results for our clients, meeting, their needs on time and within budget while supplying quality products. HFS are in-sync with clients time zone.

BOILER INSPECTION

HFS provides inspection resources, technology and software to provide the most thorough and comprehensive boiler inspections unlike any other boiler inspection company. HFS will provide the plant O&M team the ability to PRIORITY and MONITOR corrective action, tracking the status of all repair recommendations. HFS will provide detailed reports with analysis and predictive failure information to determine an accurate current and future state of their boiler systems, and repair recommendations to help minimize unscheduled (forced) outages. HFS ensures its clients a thorough and proper inspection is done on every outage, scheduled or unscheduled. And finally, HFS ensures repairs are done correctly with no "short cut" that would jeopardize the boiler integrity.



SERVICES FEATURES

BOILER INSPECTION SERVICE

Visual inspection of pressure parts, gas path, steel structure and piping. HFS will carry out evaluation of the results and present inspection report with recommendation.

ADDITIONAL OPTIONS INCLUDE

- ▶ Pre-outage walkdown and punch list report based on findings and interviews
- ▶ Thermographic survey to review casing, piping and identify leaks or faulty insulation
- ▶ Recommendation for specialist Non-Destructive Examination (NDE) tasks to be performed during the detailed Boiler inspection (NDE to be performed by a qualified NDE technician)
- ▶ Information Management and outage planning support

TYPE OF BOILERS INCLUDE

- ▶ HRSG (Heat Recovery Steam Generator)
- ▶ Coal Fired Conventional Boiler
- ▶ Oil Fired Conventional Boiler
- ▶ Industrial Boiler
- ▶ OTSG (Once Through Steam Generator)
- ▶ Incinerator
- ▶ Fired Heater



SERVICES

GENERAL BOILER INSPECTIONS

A visual survey of the general Boiler condition, external casing, internal gas-side mechanical parts and auxiliary equipment, Readily accessible pressure part components are visually inspected. HFS recommends performing such as general inspection in addition to the basic inspections stipulated by local regulatory requirements.

Time frame requirements: 2 or 3 days boiler accessibility.

ALIGNING BOILER INSPECTIONS FOR OPTIMIZED AVAILABILITY

In order to prevent forced outages, periodic inspections should be conducted during scheduled outages. This allows the identification of component damage in the earliest stages – when there is still time to schedule a cost-effective repair.

HFS recommends a general inspection every 1 to 2 years and a more detailed inspection every 3 to 5 years. In order to optimize the overall plant availability, it is important to align these inspections with those of the gas turbine. Therefore, the detailed inspection should coincide with a gas turbine planned outage, e.g. the major or hot gas path inspection.

DETAILED BOILER INSPECTIONS

Includes all the general inspection steps plus a more detailed visual inspection of all accessible pressure parts. This visual inspection will identify any areas of concern that require subsequent non-destructive examination (NDE) to be performed by HFS qualified NDE technician.

Time frame requirement: 4 – 6 days Boiler accessibility.



PRE-OUTAGE

- ▶ Walk down and punch list report based on findings and interviews
- ▶ Thermographic survey to review casing and piping and identify leaks or faulty insulation
- ▶ Recommendation for specialist non-destructive examinations (NDE) tasks to be performed during the detailed Boiler inspection (NDE to be performed by a qualified NDE technician)
- ▶ Outage planning support

DURING THE OUTAGE

- ▶ Supervision of repair or installation works
- ▶ Visual inspection of Desuperheaters, Blow Down system, Deaerator and Valves
- ▶ Review of any critical indications from the NDE inspections carried out during the detailed HRSG inspection
- ▶ Documentation and evaluation of the inspection results, using OEM lifetime information management system database for efficient Boiler condition optimization

POST-OUTAGE

- ▶ Walk down to identify start-up problems

SERVICES

BOILER REPAIR

HFS provides a comprehensive selection of boiler repair services. Our services include:

RETUBING

Partial or complete retubing for watertube and firetube boilers.

WELDING & FABRICATION

All welding repairs; boiler shell plate, tubesheets, headers, staybolts, handholes /manholes, faceplates, doors, breechings & supports. Pipe fabrication of steam, water & gas piping to ASME and /or API code, X-Ray quality welding.

AUXILIARIES & FITTINGS

Safety, blowdown, stop & check valves; gauges, test connections, water column piping, feed pumps, cutoffs, preheaters and backflow preventers.

REFRACTORY

Firebrick chambers, burner tile, venturi rings, dry oven rings and all refractory repairs.

THERMAL & ACOUSTIC INSULATION

Mineral wool blanket & pipe covers, calcium magnesium silicate (CMS) repairs for interior & exterior of boiler.

VALVES SERVICE MAINTENANCE

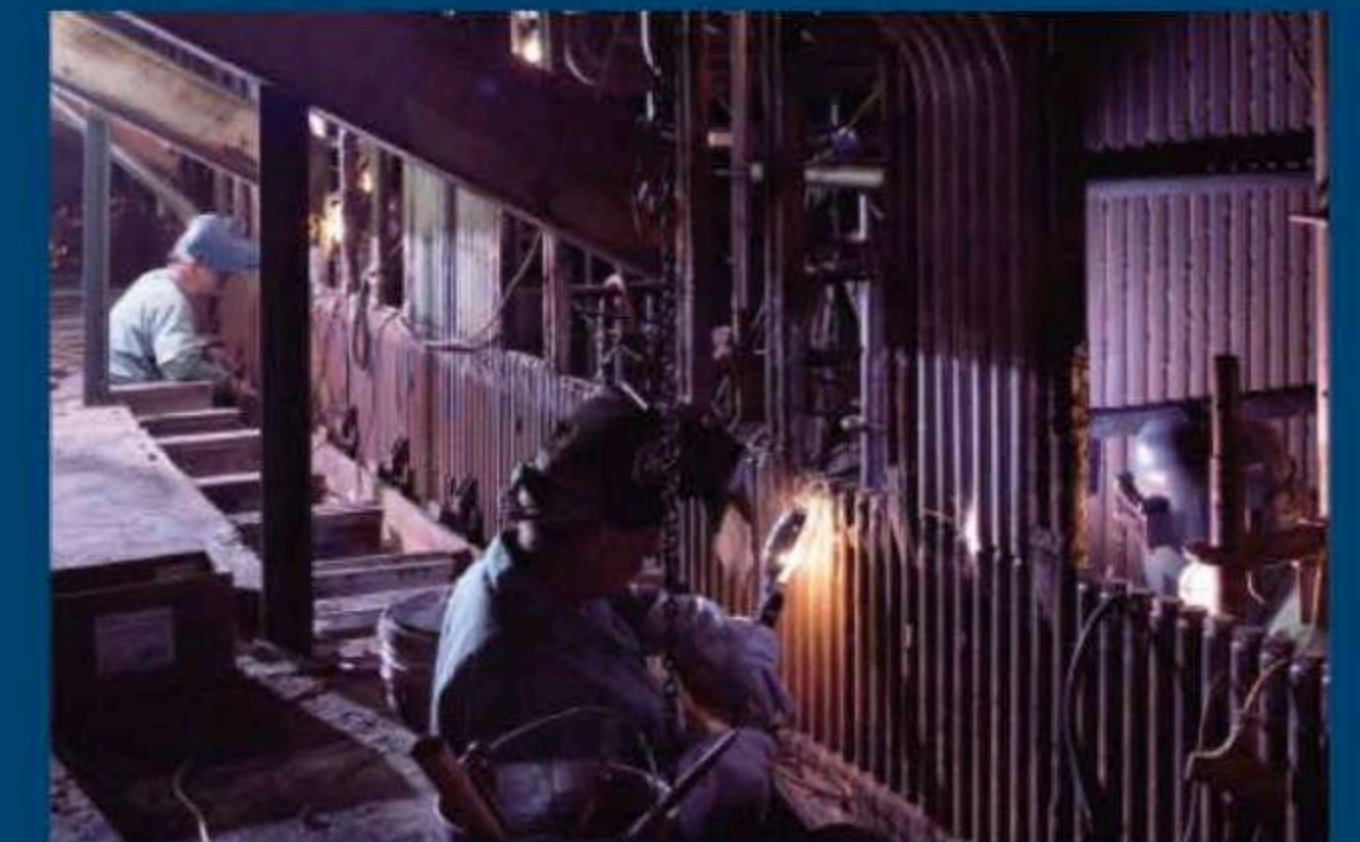
- ▶ Service & replacement
- ▶ Reverse engineering upgrade

RETROFIT AND UPGRADE CAPABILITIES

The retrofit and upgrading method to be adopted should be decided based on result of inspection and design review.

HFS can evaluate current boiler or HRSG unit and recommend the right retrofit and upgrade package. HFS can provide Turn-Key EPC capacity and our services include;

- ▶ **PP (Pressure Part) replacement**
Furnace wall replacement, Harp/semi harps/ module replacement, Bundle (coil) replacement, Link and Manifold pipe replacement, High energy piping replacement
- ▶ **Air and Gas system replacement**
Forced draft fan / Primary air fan / Air heater, Duct and casing upgrade
- ▶ **Fuel feeding system replacement**
Coal bunker, Coal feeder, Pulverizer, Fuel oil skid, Gas or Oil burner repair and addition
- ▶ SCR (Selective Catalytic Reduction) and CO system addition and replacement
- ▶ Partial tube leakage repair and/or replacement
- ▶ Expansion bellows and expansion joint retrofit and upgrade
- ▶ MOV/ CV/ Bypass Valves Re-engineering service
- ▶ Integral De-superheater (Attemperator) spray valve upgrade
- ▶ FCD (Flow Correction Device) upgrade
- ▶ Leak detecting system, Life monitoring system application
- ▶ Soot Blower
- ▶ **Reverse Engineering**



SERVICES

CONDITION ASSESSMENT SERVICES

To provide a genuine one stop option for all your inspection and assessment needs, HFS also offer condition assessment service.

- ▶ Remain life assessment and plant life extension
- ▶ Metallurgical condition review for high temp. components Thermal degradation, Fatigue, Creep
- ▶ Special NDE (PAUT)
- ▶ Portable hardness testing
- ▶ Metallographic replication
- ▶ Failure investigations and material assessment
- ▶ Remote visual inspection with borescope
- ▶ Pipe support surveys for both hot and cold condition
- ▶ High energy piping assessment
- ▶ FAC review
- ▶ Water chemistry review



QUALITY ASSURED BOILER INSPECTION SERVICES

- ▶ Boiler inspections and all components associated with the equipment in the power and Oil & Gas Industries.
- ▶ Boiler visual inspections, including HRSG, coal boiler and any other type of boiler inspection.
- ▶ Auxiliary equipment
- ▶ Quality Control
- ▶ Solution to welds problem including weld monitoring
- ▶ Facility planning and scheduling



SPECIALIZED HRSG CONDITION ASSESSMENT

- ▶ **Header Inspection**
Specialized visual inspection technique to inspect headers for signs of Flow Accelerated Corrosion (FAC)
- ▶ **Phased Array Butt Weld Scanner**
Specialized device that uses phased array ultrasonics, combined with an encoded circumferential scan, to check the quality of butt welds on manual TIG / orbital pipe welds with diameters from 1.5" to 4.5".
- ▶ **Water Chemistry Review / Corrosion Assessment**
Corrosion risk assessment based on design, historical chemistry readings, applied chemistry concept and operation profile.
- ▶ **Root Cause Analysis** - For specific problems

DETAIL SERVICES

- ▶ Detail internal and external inspection, including auxiliary equipment
- ▶ Punchlist for critical work items
- ▶ Recommendations for both current and future repairs
- ▶ Required material list to accomplish our recommendations
- ▶ Detailed service report including photographs and electronic copy
- ▶ Detail AutoCAD drawings for report illustrations and mapping
- ▶ Ultrasonic data review and planning
- ▶ NDE review and trending
- ▶ Code material requirement and procurement



ADDITIONAL SERVICES

- ▶ Quality service and inspection of damper system
- ▶ Monthly service contracts specific to customer's requirements and will work with maintenance personnel to ensure proper proactive maintenance is met.
- ▶ Turnkey service packages, quarterly or annually, with trained personnel to ensure full potential of the equipment.
- ▶ HFS offer equipment installation supervision to ensure timely schedules are met along with quality observation for the benefit of client's best interest.
- ▶ Boiler retrofit schedules, waterside inspection, furnace fireside inspection, boiler hanger assessments, component assessment and component replacement planning.
- ▶ Monitoring NDE data
- ▶ Contractor Cost Reviews
- ▶ Contractor schedule Reviews

SERVICES

SUPPLY OF SPARE PARTS & REPLACEMENT

Regardless of the ancillary equipment required by your boiler or HRSG system, every part you need is available through the spare parts division of HFS. Each part we offer is engineered and manufactured specifically to suit the original specifications of your equipment.

HFS is dedicated to providing our clients with replacement parts of the highest quality delivered in a timely manner. To benefit our clients, HFS maintains a variety of stock items. These parts are available for immediate delivery, and on very short notice.

Trust us to supply the exact replacement parts you need. You will never go wrong with our professional product knowledge. Not only can we supply OEM replacement parts such as valves, gaskets and tubes, we also provide a wide range of specialty replacement parts and upgrade items.



HFS provides engineered manufacturing and spare parts to clients with the highest quality delivered in a timely manner. To benefit our clients, HFS maintains a variety of stock items. These parts are available for immediate delivery, and on very short notice. Our service includes;

- ▶ Water wall Panels
- ▶ Coil/loop
- ▶ Bare tubes
- ▶ Finned tubes
- ▶ Headers
- ▶ Harps/ Modules
- ▶ Link and manifold pipe
- ▶ Piping
- ▶ Drums/Blowdown/Flash Tank/ Deaerator
- ▶ Fittings (Elbow, Reduce, Tee etc.)
- ▶ Manhole, Access Door assembly
- ▶ Demister and Steam Drum Internals
- ▶ Duct and casing
Pyro-Block, H-Board, CMS, Insulation
- ▶ Gas Turbine Air Intake System include Filter
- ▶ Safety valves
- ▶ Motor Operated Valve
- ▶ Control Valve
- ▶ De-superheater (Attemperator) Spray Valve
- ▶ Gate, Check, Non-return, Glove Valves
- ▶ Strainer, Steam Trap
- ▶ Stack damper/ Diverter Damper
- ▶ Instrument, Thermowell, Thermocouple, Transmitters
- ▶ Burner/ BMS
- ▶ Level gauge/RDLI (Remote Display Level Indicator)
- ▶ Metallic and Non-Metallic Expansion Bellows
- ▶ Expansion Joint
- ▶ SCR systems
- ▶ Pump
- ▶ Mobile Gas Turbine Generator/ Diesel Engine Generator



TRAINING

Based on our experience, many users of boiler/ HRSG units have never been properly trained. To meet productivity targets and emissions regulation, it is crucial to operate and monitor the essential equipment in the right way every day.

By conducting on-site personal training seminars which can be tailored for specific site requirements and providing the service of technical personal assist our clients operation and maintenance team.

We have been able to ensure that O&M (Operation & Maintenance) procedure are properly and efficiently implemented. We also train the Boiler and HRSG engineering and inspection upon customer demand.

Below are some of the training programs that HFS can provide on-site to suit our client's schedule;

- ▶ Thermal Review of HRSG
- ▶ Code/ Pressure Parts
- ▶ Boiler Component Engineering
- ▶ Life/ Age Analysis
- ▶ Operation Study
- ▶ Thermal Stress Analysis
- ▶ Vibration and Noise Engineering
- ▶ Failure Mechanisms
- ▶ Water Chemistry
- ▶ Boiler Inspection
- ▶ Preventive and Reactive Maintenance
- ▶ Piping Hanger System

STEAM TURBINE SERVICE

Building upon our established excellence in HRSG and boiler technology, HFS extends its engineering capabilities into the specialized field of steam turbine services.



We provide targeted solutions covering performance audits, technical assessments, engineering consultation, inspection, maintenance, refurbishment, and optimization to ensure reliable and efficient turbine operation across power generation and industrial applications.

Supported by strong technical expertise and collaboration with reputable international partners, we deliver solutions that meet stringent industry and site requirements. In addition, we supply critical spare parts, including precision hydraulic tools for nuclear power plant applications, supporting safe and compliant maintenance activities.



OIL & GAS DIVISION MARINE BUSINESS DIVISION

OIL & GAS

Given the burgeoning developments in the construction, infrastructure, as well as oil and gas industries in the region, HFS has the expertise to keep various sectors well-oxidized. Literally, with in-depth competencies in murky project management and budget development, we have the edge to offer the full range of services, from fabrication, construction, transportation, installation, commissioning, inspection and maintenance of onshore and offshore structures and piling works.

Coupled with specific skills in fabricating and constructing toneleries, process skids and modules, jackets, accommodation modules and living quarters, we have become the trusted vendor for oil and gas production facilities, gas processing plants, oil refining plants and petrochemical plants.

Combining onshore process plant expertise with offshore module fabrication experience, we will continue to sparehead premium value-added services and go the extra mile to deliver the best quality for the oil and gas industry. These are some of the services we have been providing since 2003.

Well-trained, competent and experienced in all aspects of project management, the team at HFS is committed to offering total engineering and construction solutions to satisfy the needs of its clients from diverse industries. At HFS, our professional capabilities span various fields. Whether it is providing marine services, engineering services, or helping across different countries, driving power plants with energy solutions, or customising structural and piping works for the oil and gas industries, we have developed the edge to execute a wide array of projects through our three business divisions as follows:



ENGINEERING FABRICATION AND CONSTRUCTION

- Steel work, piping and mechanical construction
- Topside / Central Processing Platform
- Process skids and modules
- Jackets
- Accommodation modules and living quarters.
- Provision of manpower services for Onshore and Offline works
- Wellhead Platform (WHP)

MARINE BUSINESS DIVISION

The Marine Business Division is capable of building, repair, refurbish, and maintain various types of ships to meet various demands from its clients. It provides engineering and construction capabilities for various type of ship and offshore structure and carries out all phases of project implementation.

SHIPBUILDING

- SHIP REPAIR, Refurbishment and Maintenance
- Precision machinery
- Pipe fabrication
- Full refurbishment
- Electrical works
- Mechanical works
- Supply of spare parts
- AQUASTROP Ballast Water Management System (BWMHS) Retrofit

ENGINEERING FABRICATION AND CONSTRUCTION

- FPSO / FSSO / FSSU Conversion
- Jack (I) Semi Sub Tender Rig Conversion
- AQUASTROP Ballast Water Management System (BWMHS) Retrofit

ENGINEERING & FABRICATION YARD

in partnership with our valued partner, Seagull Pte. Ltd., a Singapore-based company specializing in subsea engineering, fabrication supplies, and services, our fabrication yard is strategically located within the Tanjung Langsat Marine Terminal. The yard features deep-water berths and modern infrastructure. With expansive facilities and comprehensive logistics support, it is fully equipped to deliver top-tier marine and fabrication services with efficiency and scale.

The workshop covered area has the production capacity, subject to proper issuance of drawings, cutting plans, and material availability, as follows:

1. Primary Structure Fabrication - 400 to 500 MT per month
2. Secondary Structure Fabrication - 300 to 400 MT per month
3. Tertiary Structure Fabrication - 150 to 250 MT per month

CAPACITY

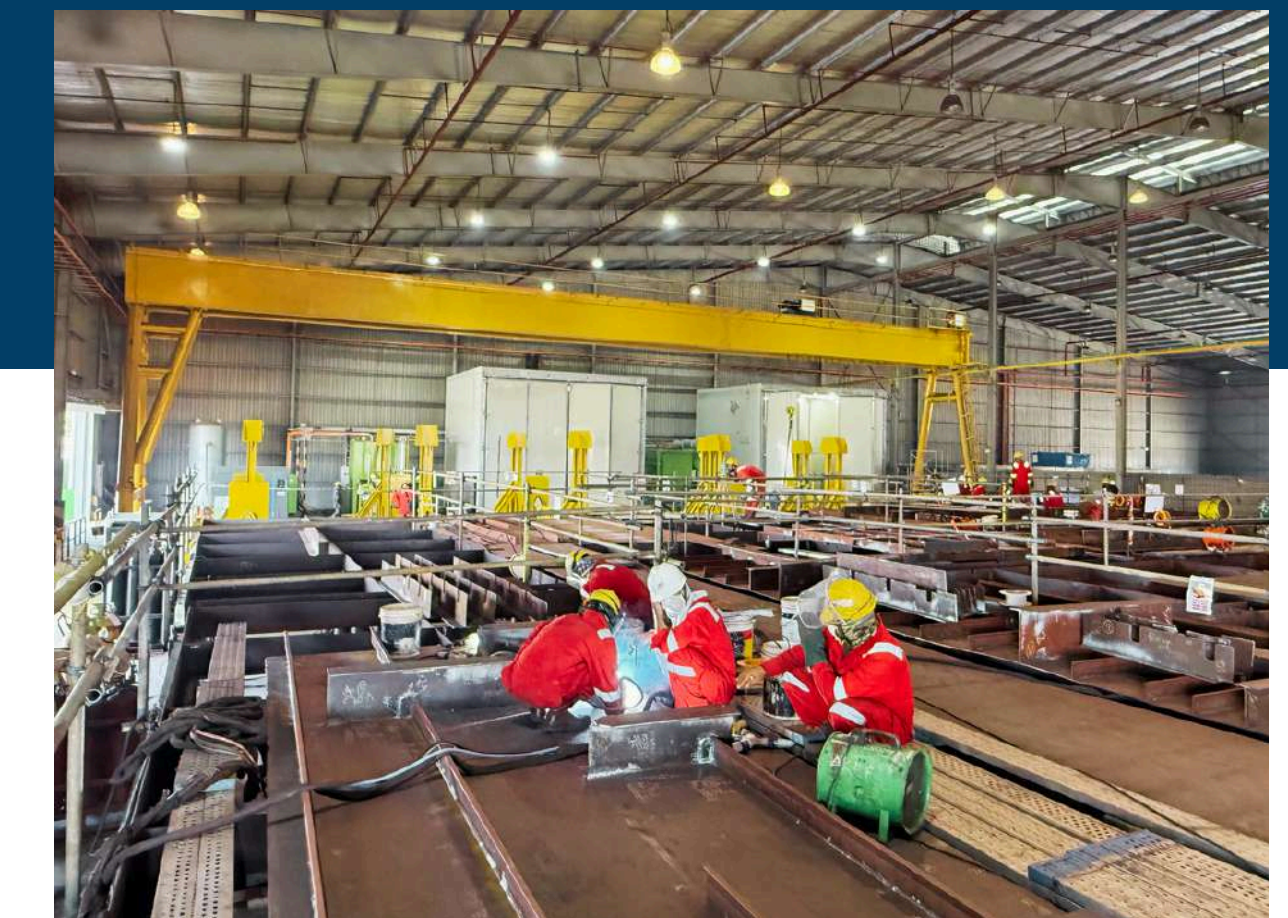
	Covered Workshop	Open Yard
Area (sq ft)	60,000 sq ft	90,000 sq ft
Crane (Crane Hook Height 32ft)	20MT 25MT	Gantry Type 35MT
CNC Machines	4 units	-
Blasting & Painting Chamber	3,000 M3	-

CORE CAPABILITIES:

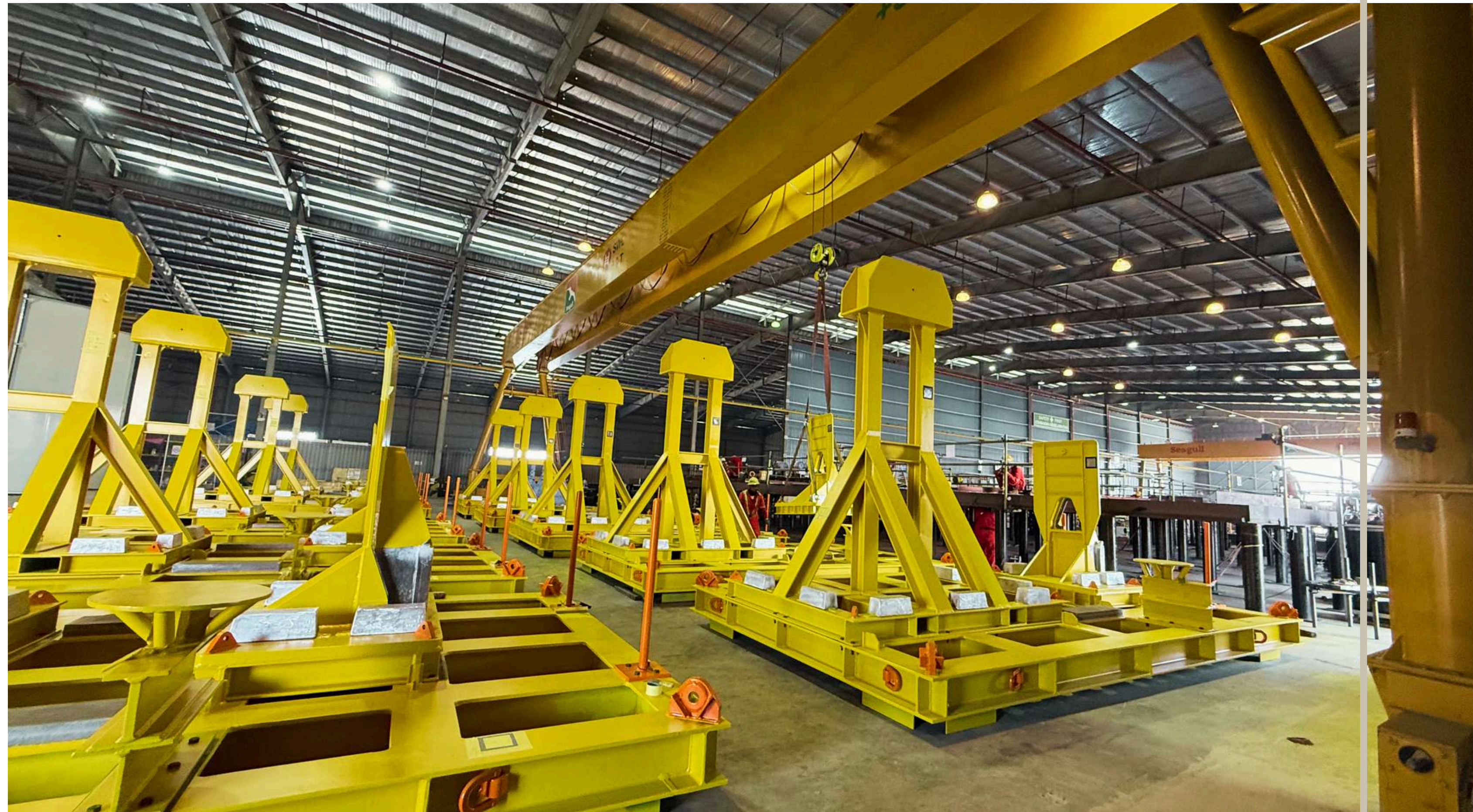
- Access to waterfront facility (545mtr quay length with 11mtr Draft and Capacity (DWT) - 40,000
- Coating Shop
- CNC Plate Cutting Machine
- Rolling Machine

SERVICES WE CAN OFFER

- Heavy structural fabrication
- Mechanical and piping works
- Skid and modular assembly
- Electrical & instrumentation works
- Surface preparation and painting
- Pre-commissioning and loadout



Fabrication Yard Address
 PLO 210, Pelabuhan Tanjung Langsat,
 Perindustrian Tanjung Langsat,
 81700, Pasir Gudang, Johor, Malaysia



VALVE SERVICE DIVISION

Our team is ready to support our customers with various valve requirements, repairs, and maintenance planning through to complete lifecycle execution. We offer maintenance supervision for installations and long-term maintenance support. Our services include testing with new equipment, maintenance, and upgrades of existing parts, as well as preventive maintenance to ensure safety standards. We also provide valve testing, repair, and calibration services for all types of valves. We are accredited under ISO9001 and ISO45001.



ENGINEERING SERVICES

Good customer service and engineering services do not end with the sale; they are only the beginning. We will support you with professional installation and commissioning, troubleshooting, and engineering services, including reverse engineering of control valves.

VALVE MAINTENANCE & SERVICES (ALL TYPE OF VALVES)

- Service maintenance, overhaul & testing (workshop & In-situ)
- Value preventive maintenance and corrective maintenance
- In-situ valves machinery and services
- Valves flushing, lubrication & sealant on-site
- Manage and execute shut-down and preventive maintenance
- Actuator valve service and repair
- Fabricate and supply new parts soft parts & metal parts)
- Supply competent manpower

INSTRUMENT / ELECTRICAL MAINTENANCE, SERVICE TESTING & RE-CALIBRATION

- In-situ maintenance, service & overhaul
- Control valve on-site calibration
- Transmitter annual calibration
- Plant commissioning and start-up
- Control valve actuator refurbish and service
- Built-up control valve control panel and system
- Supply competent manpower
- Safety valves pop-test and recalibration on-site

TESTING & COMMISSIONING

This service includes installation, testing, commissioning, and maintenance of various types of valves.

SUPPLY OF VALVE AND SPARE PARTS

Being in partnership with various top valve manufacturers worldwide, HFS is able to provide a wide range of valve products, including control, cryogenic, manual, and safety valves, as well as spare parts.

REVERSE ENGINEERING FOR CONTROL VALVE

HFS provides Reverse Engineering Service. Often spare parts supplied by customers are incompatible because they are obsolete, out of production, or cannot be procured in time for maintenance and operations.

Reverse engineering involves using a 3D scanning system to capture design information and redesign parts such as stems, timbs, and packing. This process not only duplicates the original parts but also improves and upgrades them for better performance.

The construction and precision of these components are guaranteed by using CNC multi-axis machinery and turning centers. The information from reverse engineering and 3D modeling is perfectly integrated with the production CAD/CAM system.



ENGINEERING & CONSULTATION DIVISION

OUR SERVICES INCLUDE:

- DOSH/JKKP Consultant Services
- DOSH/JKKP Approval Services
- Machinery and Plant Registration
- Process Safety Management (PSM)
- Boiler and Pressure vessel
- Design Approval
- Design and Engineering Consultation
- Testing and Commissioning Consultation
- Training
- Lifting and Hoisting Machines
- Design Approval
- Testing and Commissioning Consultation
- Factory and Machinery Audit
- Occupational Safety and Health Audit
- Policy and Legislative Compliance Application
- Noise Risk Assessment
- Indoor Air Quality Assessment
- Initial Ergonomic Assessment
- Welding Consulting (WPS, PQR & WPQTY)



LEGATEST IN-SITU / ONLINE VALVE TESTING SERVICE



REDUCED DOWNTIME

When valves are tested offline, they must be removed from the system and taken to a testing facility. This can cause significant downtime, as the system must be shut down and the valves must be reinstalled once they have been tested. Online testing can be performed without interrupting system operation, which can save a significant amount of time and money.



INCREASED ACCURACY

Online testing is more accurate than bench testing because it is performed under actual operating conditions. This is important because safety valves are designed to operate under specific conditions, and their performance can degrade if they are not tested under these conditions.



FULLFILL THE COMPLIANCE

Many industries, such as the oil and gas industry, have regulations that require safety valves to be tested on a regular basis (15 months), SSI or SR.



INCREASED PEACE OF MIND

Knowing that your safety valves are being tested regularly can give you peace of mind and help you to focus on other aspects of your business.



ATEX, TUV, BV & DNV Certified



IMPROVED SAFETY

Online testing can help to improve safety by ensuring that safety valves are functioning properly. If a safety valve fails to operate properly, it could release hazardous materials or cause other problems. Online testing can help to identify and correct potential problems before they cause an accident.



WHY ONLINE VALVE TESTING - LEGATEST

Here are some technical issue in common valve inspection:

Sensor overload protection

the maximum motor is limited by the force sensor measuring range.

System overload protection

the maximum motor pulling force is mechanically limited so that the respective design valves of the components are not exceeded.

Excessive temperature protection

temperature is monitored. If the temperature valve exceeds the operating limits, the system is automatically shuf off.

Valve overload protection

the maximum force applied to the valve is calculated from the valve data.

Power monitoring

an electronic system monitors if the supplied current and tension meet the requirements of the electronic components.

Maximum lift limitation

the maximum lift of the valve disk can be limited through the valve parameters.



HFS GLOBAL PARTNER



HFS HEAVY INDUSTRIES
SDN BHD

CORPORATE STRUCTURE



OUR CERTIFICATE



Occupational Health and Safety Management System Certificate
ISO 45001 : 2018

Quality Management System Certificate
ISO 9001 : 2015

Grade G7
CIDB Malaysia
Perakuan Pendaftaran

JKKP / DOSH Certification
► Pembalkpullh Bejana Tekanan Tak Berapi (PVR01)
► Pembalkpullh Dandang Stim (SBR01)
► Pembalkpullh Bejana Tekanan Berapi (SBR02)

Kementerian Kewangan Malaysia Certification

PROJECT HIGHLIGHT

PROJECT

► Kasawari CPP Topside

SCOPE

► Piping Erection Works - Spools Installation, Testing and Resinatement Works of Varolus Piping Mat'I (CS,SS,DSS,CuNi)

LOCATION ► MMHE Pasir Gudang, Johor

YEAR ► Mar 21 - Aug 23

HOST / OWNER ► Petronas Carigali

DIA-INCH INFO ► 65,00 Dia-Inch 250MT Pipe Support



PROJECT

► Rosmari Marjoram Fixed Offshore Platform

SCOPE

► Fabrication and Assembly of Topside Structure and Mechanical Installation Works

LOCATION ► MMHE Pasir Gudang, Johor

YEAR ► Jan 23 - Mar 23

HOST / OWNER ► Sarawak Shell

STEEL WORKS ► 1,300 MT



PROJECT

► Tuanku Ja'afar Power Station

SCOPE

► PD2 HRH Main Steam Stop Valve Seat Crack Repair

LOCATION ► Port Dickson, Negeri Sembilan

YEAR ► Dec 21

HOST / OWNER ► TNB Power Generation Sdn Bhd



PROJECT

► Panglima 720MW CCGT Power Plant Melaka - 2 x HRSG Boiler

SCOPE

► Complete Erection of HRSG Pressure & Non Pressure Part, Piping & Supports Installation

LOCATION ► Telok Gong, Melaka.

YEAR ► Jan 02 - Aug 02

HOST / OWNER ► Siemens Power Generation



PROJECT HIGHLIGHT

PROJECT

Malakoff Prai Power Plant ▶ Major Outage Aug 2017 (HRSG) ▶ Minor Outage Mar 19 (HRSG)
▶ Major Outage Jan 20 (HRPI)

SCOPE

- ▶ Auxiliary Boiler Repair & Maintenance Works.
- ▶ Engineering, Procurement and Construction of HPHTSH Semi Harps (Header + Tubes) Replacement
- ▶ Engineering, Procurement and Construction of HPSH Outlet Pipe Relocation and Replacement Works.
- ▶ Supply, Replacement Work of HPSH Bellows
- ▶ Engineering, Procurement & Construction of HRSG Flow Corrective Device (Modification to improve HRSG Inlet Flow Profile)
- ▶ CUI Inspection and Repair for HRSG, BOP and Aux. Boiler
- ▶ Aux Boiler Furnance Refractory Repair
- ▶ Manhole and Platform Installation and Permanent Support to Baffle Plate
- ▶ CRSV 191 Safety Valve Replacement
- ▶ Boiler Tube Repair and sampling
- ▶ Supply and modification for HTRH Pipe Support and Hanger Support Adjustment Work
- ▶ HRSG Blowdown Tank & Aux Boiler Blowdown Tank Internal Recoating
- ▶ Service Air Pipe Replacement
- ▶ To provide fabrication works for intake bar screen for Prai Power Plant
- ▶ Supply, Fabricate and Replace/Install Cooling Water Pump Lines
- ▶ ST & HRSG Thermowell Cutting, Boring & Re-Welding
- ▶ Supply, Fabricate and Replace/Install Fire Fighting Water Lines and Instrument Air Lines
- ▶ HRSG Valve and Piping replacement
- ▶ Supply and Deliver Pipe & Fitting for CUI

YEAR ▶ Nov 16 - Oct 17, Mar 19, Jan20 - Mar 20

LOCATION ▶ Prai, Penang

HOST / OWNER ▶ Malakoff Power Berhad



PROJECT HIGHLIGHT



PROJECT

YTL Power Seraya ▶ Cogen 40 Major Outage Jan 18 & Feb 18
▶ Cogen 30 Outage Jul 18 & Aug 18

SCOPE

- ▶ Engineering, Procurement and Construction of Condensate Preheater (EC-PR3) Harp Replacement Works Unit 40 & 30 (12 Harps in Total)
- ▶ Conditions Assessment of Complete HRSG 40 & 30 BOP Piping Supply, Replacement Work of 40 & 30 Hanger Supports (70 in Total)
- ▶ Engineering, Procurement & Construction of HP Economizer #4 & IP Evaporator Tube Replacement Works Unit 40 & 30 (522 Tubes in Total)

LOCATION ▶ Jurong Island, Singapore

YEAR ▶ Jan 18 - Feb 18, Jul 18 - Aug 18

HOST / OWNER ▶ YTL Corporation



PROJECT

▶ Panglima Power Major Outage Oct 2017 (HRSG)
▶ Panglima Power Major Outage Nov 2019 (HRSG)

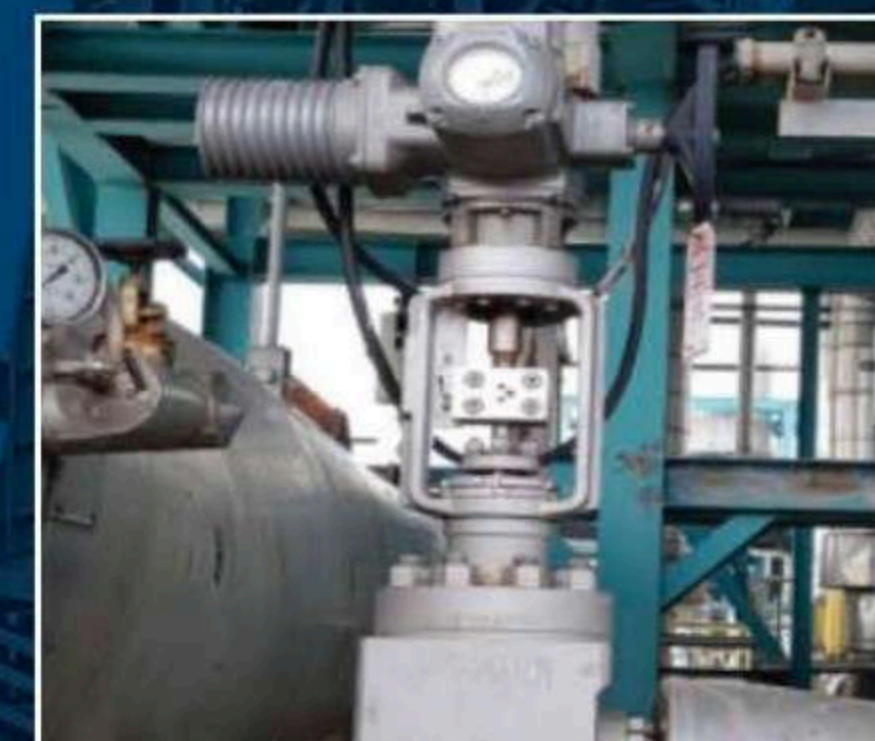
SCOPE

- ▶ Conditions Assessment of Complete HRSG & BOP Piping Supply
- ▶ Supply, Replacement and Adjustment Works of HRSG Pipe Hanger and Pipe Clamp
- ▶ Supply of Upgarded HP Desuperheater Spray Control Valve (Final Stage) & Desuperheater Pipe Spool (P91 Material)

LOCATION ▶ Telok Gong, Melaka

YEAR ▶ Jan 17 - Nov 17, Nov 19

HOST / OWNER ▶ Edra Energy



PROJECT ▶ Panglima Power Sdn Bhd

SCOPE ▶ Supply of HP & RH Desuperheater Spray Control Valve

LOCATION ▶ Telok Gong, Melaka

YEAR ▶ 2017, 2018, 2020

HOST / OWNER ▶ Edra Energy

PROJECT HIGHLIGHT

PROJECT ▶ Bekok A & B Project

SCOPE

▶ Structural, Piping & Mechanical (Multidicipline Package) og 2 nos of WHP Topside, Jacket and Bridge

LOCATION ▶ MMHE Pasir Gudang, Johor

YEAR ▶ Jan 20 - Jul 20

HOST / OWNER ▶ Petronas Carigali



PROJECT

▶ FSO Sao Vang - External Turret
▶ FSO Sao Vang - Vessel RLE & Conversion

SCOPE

▶ Fabrication and Erection of Multi-dicipline Works; Structural, Piping and Mechanical
▶ Repair Life Extension (RLE) & Coverion of Structural & Piping Works, Forepeak Modification and Turret Integration Works

LOCATION ▶ MMHE Pasir Gudang, Johor

YEAR ▶ May 19 - Mar 20

HOST / OWNER

▶ Promor Pte. Ltd. / Malaysia Vietnam Offshore Terminal (MVOT)

WEIGHT INFO ▶ 1340 MT & 800MT

PROJECT

▶ FPSO Cendo Phase 2

SCOPE

▶ Fabrication, Installation and Testing of Hull / Vessel Piping Systems in Cargo Tanks, Ballast Tanks, Pump Room, Fwd Pump Room and Main Deck
▶ Facbrication, Installation and Testing of Topside Piping System

LOCATION ▶ MMHE Pasir Gudang, Johor

YEAR ▶ Dec 11 - May 14

HOST / OWNER ▶ MiSC Berhad / Petrofac (M) Sdn. Bhd.

DIA-INCH INFO

▶ Vessel : 85,000 DIA Inch / Topside Piping : 110,000 DIA Inch



PROJECT HIGHLIGHT

PROJECT

▶ Malikai TLP Project

SCOPE

▶ Fabrication and Installation of Structural Columns and Pontoon

LOCATION ▶ MMHE Pasir Gudang, Johor

YEAR ▶ Mar 15 - Jan 16

HOST / OWNER ▶ Sabah Shell Petroleum Co. Ltd. / MISC

WEIGHT INFO ▶ SW Column : 1350 MT / South Pontoon : 340 MT



PROJECT

▶ PFLNG Turret

SCOPE

▶ Turret - Structural & Piping Works

LOCATION ▶ MMHE Pasir Gudang, Johor

YEAR ▶ Oct 16 - June 17

HOST / OWNER ▶ SOFEC/ Petronas Carigali

WEIGHT INFO ▶ 2800 MT

PROJECT

▶ Dan Gote Calm Buoy Project

SCOPE

▶ Structural, Piping and Mechanical Works

LOCATION ▶ MMHE Pasir Gudang, Johor

YEAR ▶ Nov 16 - Feb 18

HOST / OWNER ▶ SOFEC Inc

WEIGHT INFO ▶ 1200 MT

